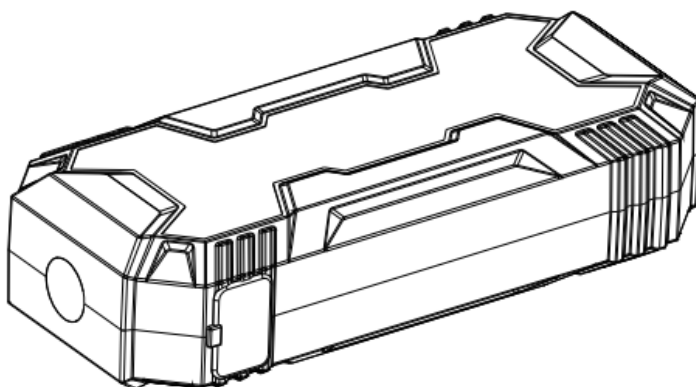




Multi-function portable car jump starter

User Manual



Please charge the jump starter every 4-6 months to extend battery life.



Thanks for choosing the multi-function jump starter. Please read this manual carefully before using and keep it for review.

This manual helps you to operate device correctly, But it is not the introduction of the soft & hard warconfiguration. Any configuration of products, Please refer to the related contract or consult with your distributor. The images in this manual are for reference only, Thank you!

Safety and maintainance

Please follow the notice as below and read the user manual carefully

- ★ Please do not open this unit. Opening may break or damage components, and will avoid the warranty.
- ★ Please do not place the product in high-intensity magnetic field in order to avoid the damage parts of components that may cause the product can't work normally.
- ★ This is not water-proof products, please do not place it in wet conditions. In order to avoid heat, smoking, deformation, damage even exploding for battery which is caused by short circuit, please do not place the product into water.
- ★ Do not allow children to use this unit.
- ★ Please fix the product when you keep it in your auto trunk.

- ★ Please recharge the product every 6 month at least though you don't use it at all , If you can recharge it every 3 month, it is much better for battery life .
- ★ Please do not throw device into fire in order to avoid exploding.
- ★ Please deal with the dead product as rules, do not throw it away as normal rubbish in order to avoid exploding or contamination.

Attention

- ★ This unit contains a lithium polymer battery. It is only use as emergency power but it can not instead of car battery. Always comply with transport and safety regulations in the use and disposal of such batteries.
- ★ When using the Jump Start function, do not allow the positive and negative poles to contact each other. This may cause sparking and result in a safety hazard, and cause a short circuit of the unit.
- ★ When the car battery voltage is less than 3V, the Smart Boost cable will disable the Jump Start function.
- ★ Please operate the product in the temperature of -10℃ to 60℃.

【I】 Appearance Instruction

1.1 Mainframe instructions

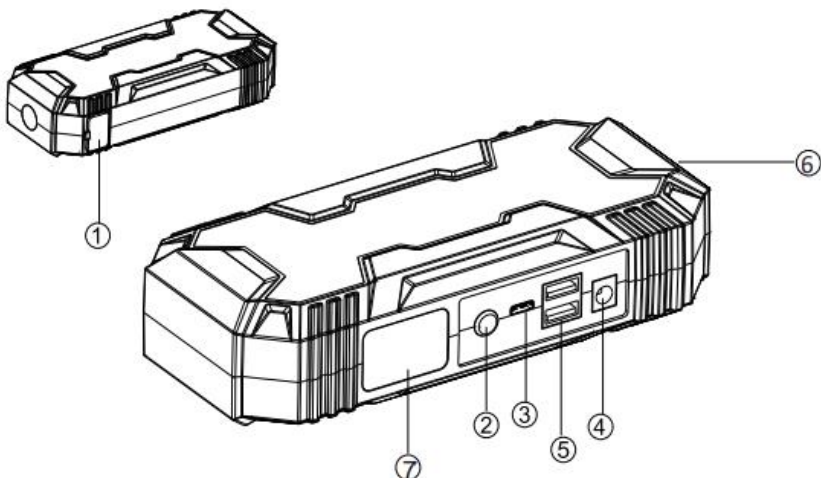






Figure 1 Product appearance instruction

- | | |
|--|---------------------------------|
| ① EC8 vehicle starting output/dust cover | ④ DC output 12V-10A |
| ② Power switch | ⑤ USB output 2x5V-2.1A |
| ③ Type-C input | ⑥ LED white light warning light |
| | ⑦ LED screen |

【II】 Button Function Description

 **Battery capacity query key:** Under the off state, short press  to start; the battery capacity indicator is on to display to current capacity and start the mobile battery function. If there is no any operation or not connected to other charging device after starting, the product will be automatically turned off.

Light mode: Long press the  button for three seconds to start the LED working light, long press again for three seconds may turn off the LED working light and . Under the light-on mode, short press  button to switch between "white lighting", "SOS", "flash light" .

White lighting: White light LED is on for a long time.

SOS: White light LED is pressed for three short → three long → three short as a period to flash, and repeat Flashlight: Flash fast in a "bright → dark" mode, and repeat

Check the battery starting capacity

- ◆ Before connecting to the power, please turn the switch to ON position and check if the battery capacity display satisfies the battery starting capacity conditions.
- ◆ The battery is low, please charge (the display screen is 100%) to use.
- ◆ Please charge in time under low-capacity conditions.
- ◆ prohibited to start the diesel engine under power alarm, low battery and power shortage conditions to avoid serious power damage.

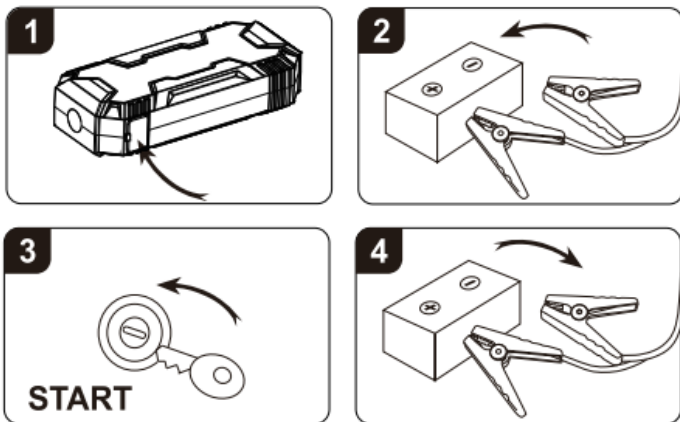
	Fully charged state		Low battery state
	Under battery state		Insufficient voltage state

How to use this product to start vehicles

This product can be used to start vehicles when the vehicle battery is under battery state or at a low temperature that cannot start.

Instructions:

- 1) Open the product dust cover and insert the output cable of the accessory ignition clip into the product "EC8 vehicle starting output" port;
- 2) Clip the red ignition clamp onto the positive anode of the vehicle battery, and the black one clip to the negative anode. (The positive anode of the clip is red, and negative anode is black)
- 3) Please start the vehicle after connecting correctly.
- 4) After starting, please remove the ignition clip attached to the vehicle battery.



Note: Product will not work properly with incorrect operation (e.g. connect reversely). The positive anode of the ignition clip connects the positive anode (red) of the vehicle battery, and the negative anode of the ignition clip connects the negative anode (black) of the vehicle battery.

【III】How to use the charge and discharge function of this product

Product charging: It supports Type-C USB 5V/2A 9V/2A and DC12V/1A charging. Please select the corresponding connection line to recharge the product, so as to avoid damaging the product.

USB output: the product is equipped with standard USB output, providing the maximum 5V/9V-2A current output, which can charge the standard USB device. Please use the original USB data line that you want to charge the device to charge.

Specifications

USB output	USB: 2x5V-2.1A
input voltage	Type-C USB:5V/9V-2A
DC output	DC 12V-10A
Charging time	6 hours
LEDpower	1W
Weight	540g
Working temperature	-10°C-60°C
Product size (LWH)	180X82X45mm

Warranty card

We offer 12-month warranty service for the product from the date of purchasing.

Warranty conditions:

Please show this warranty card and fill in the details to obtain warranty service. We offer 12-month warranty for the product from the date of purchase.

Warranty range:

Quality problems in the state of normal use can be guaranteed.

Damages to the product caused by the operational errors. Warranty can't be provided.

The device is dismantled, no warranty.

Product's sticker is torn off, no warranty.

We can provide maintenance service to the product that is beyond the scope of warranty, but the demander need to pay maintenance.

Model No.		Series No.	
Purchase Date		Repair Date	
Customer Name		Tel	
Customer Address			
Sales Unit			
Description of Malfunctions			